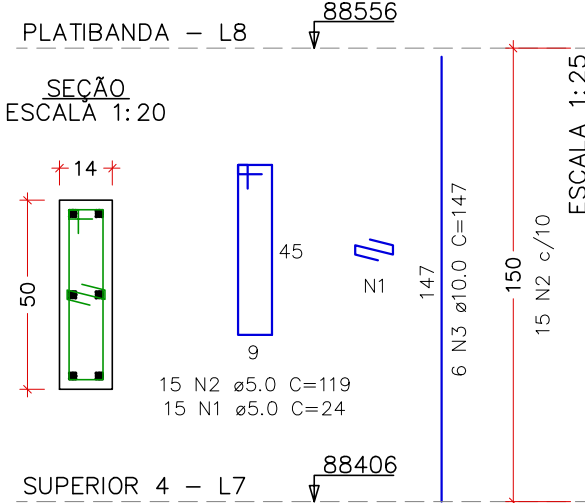
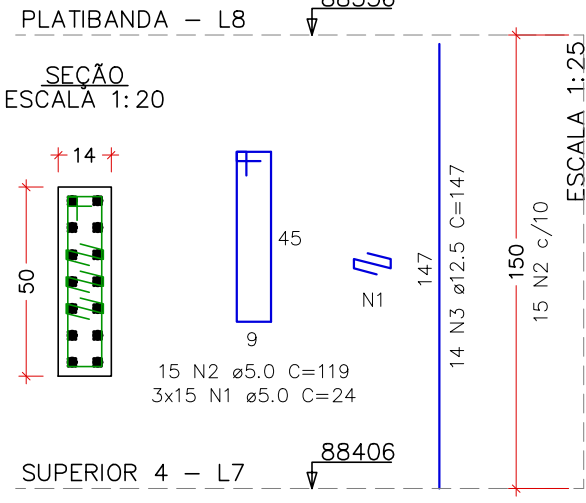


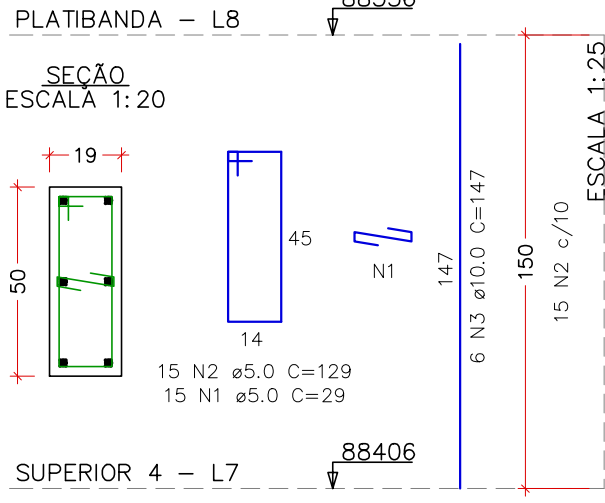
P2=P4=P38=P63=P89



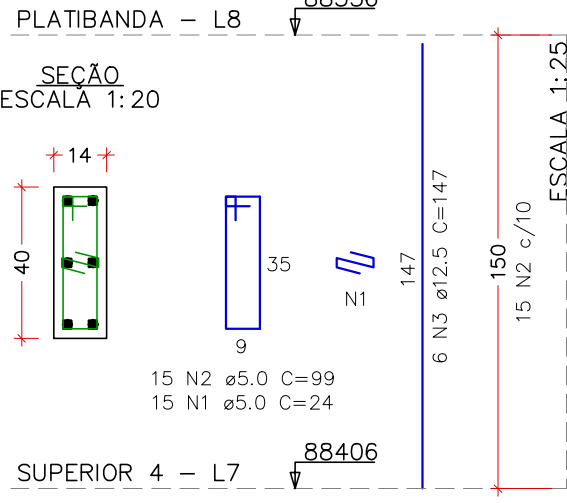
P10



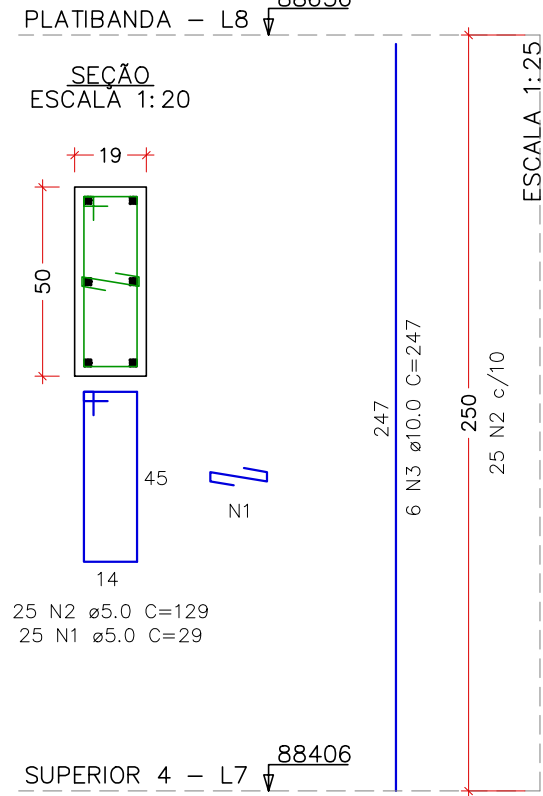
P18=P45



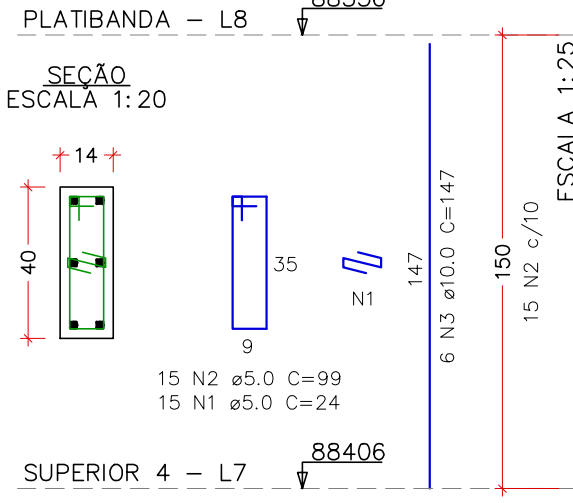
P29



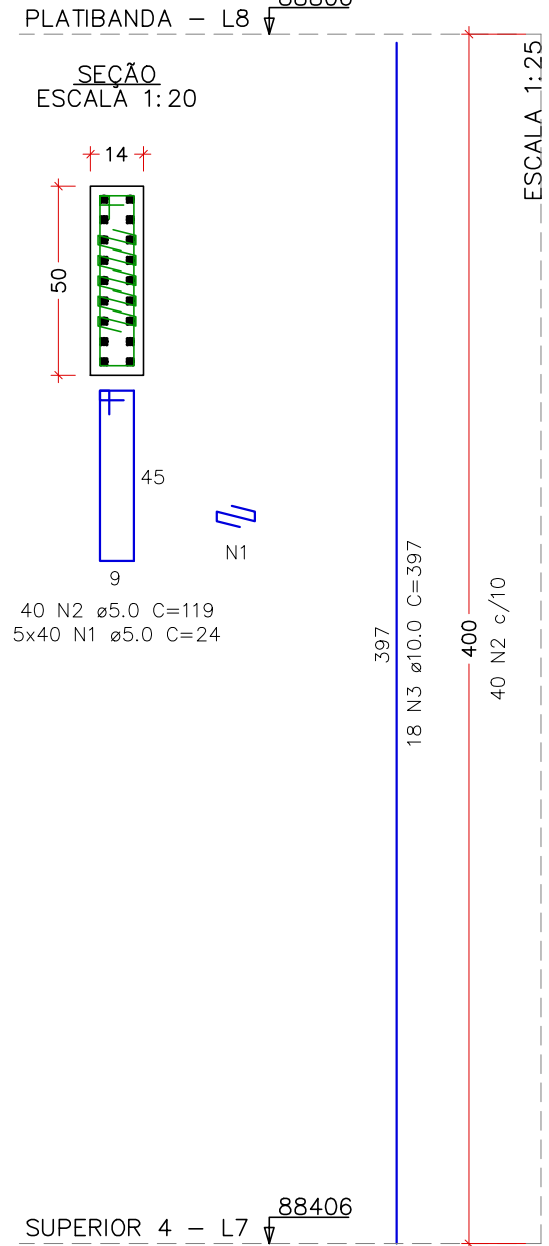
P32



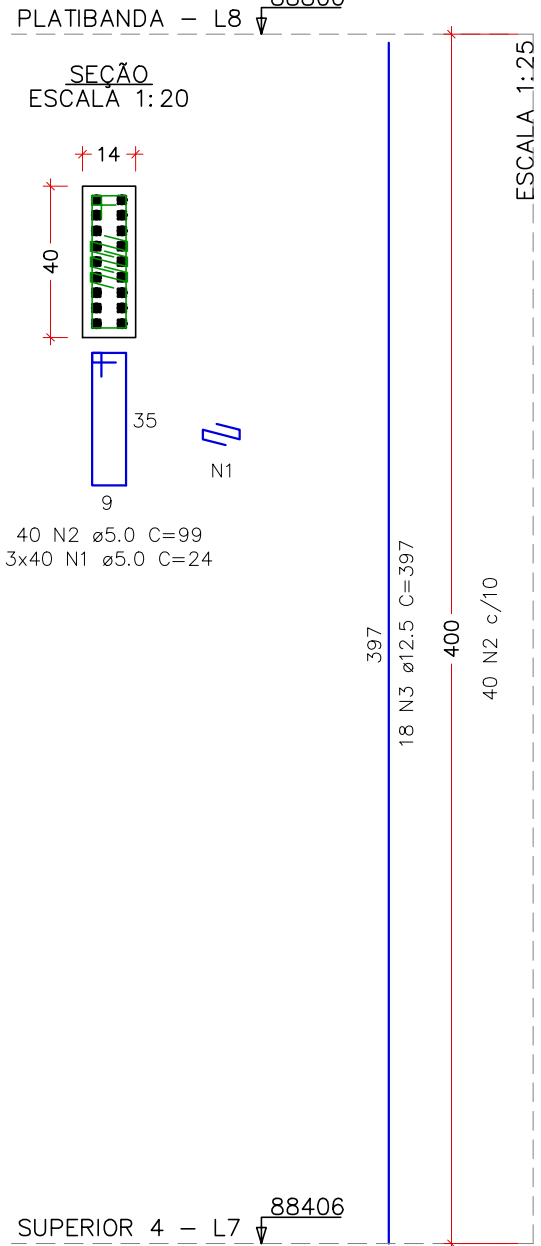
P43=P93



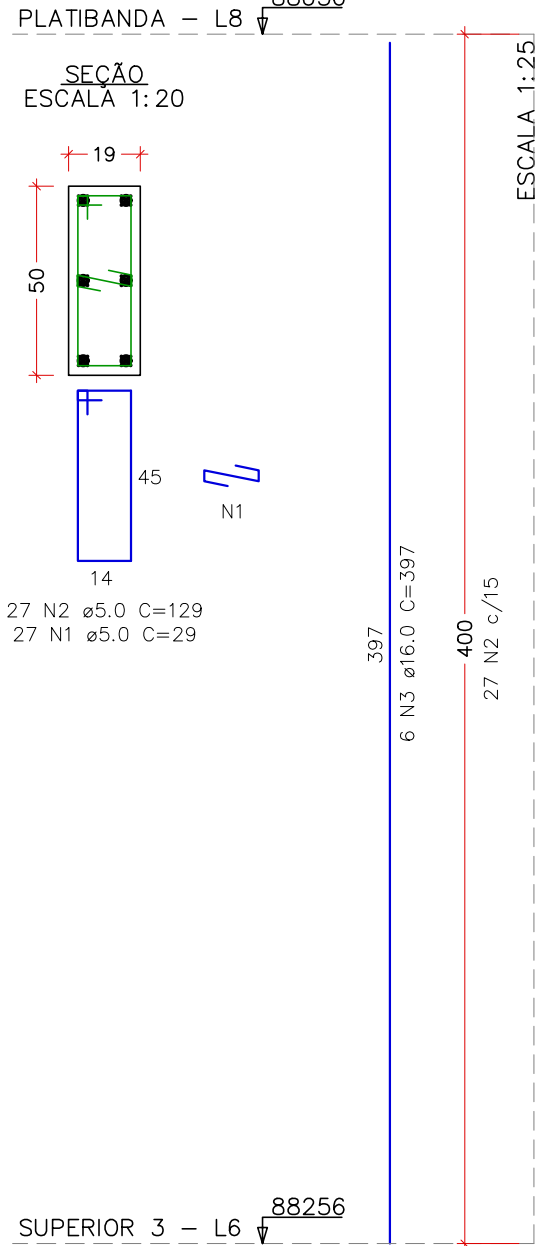
P6=P8



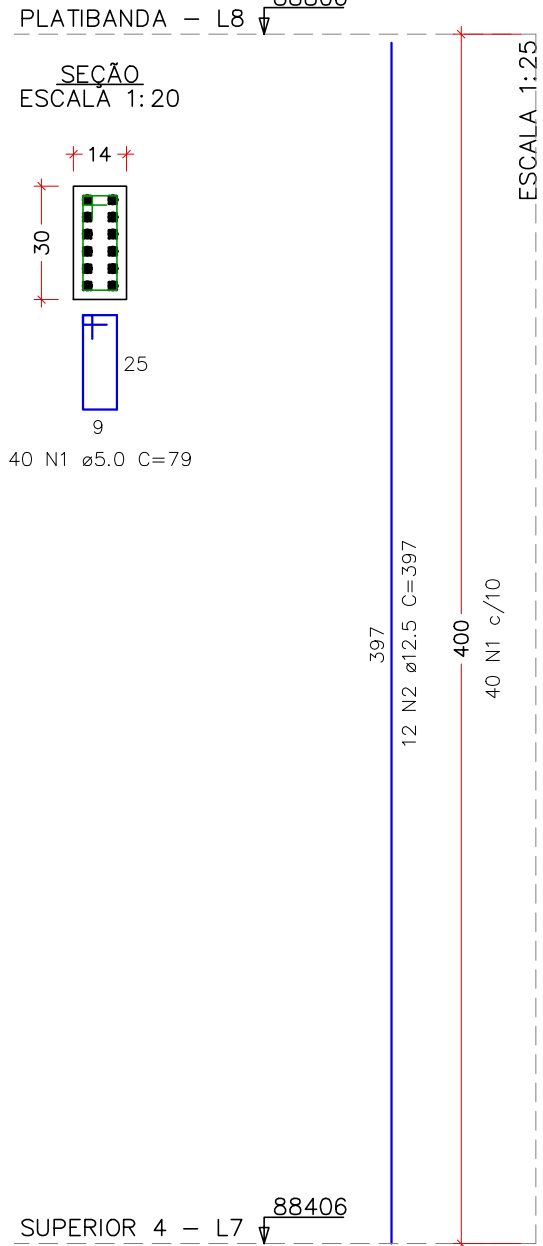
P28



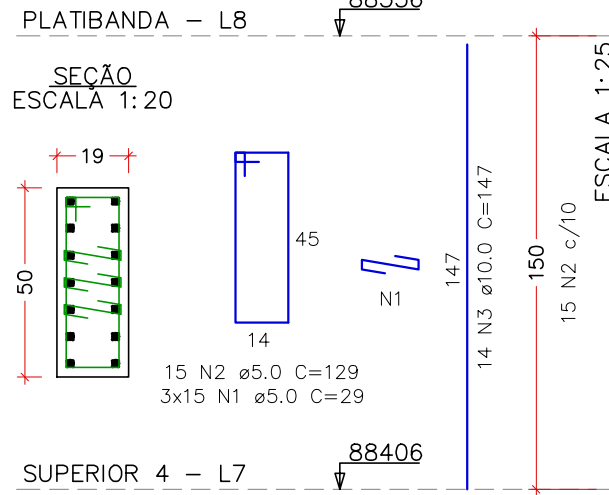
P34=P50



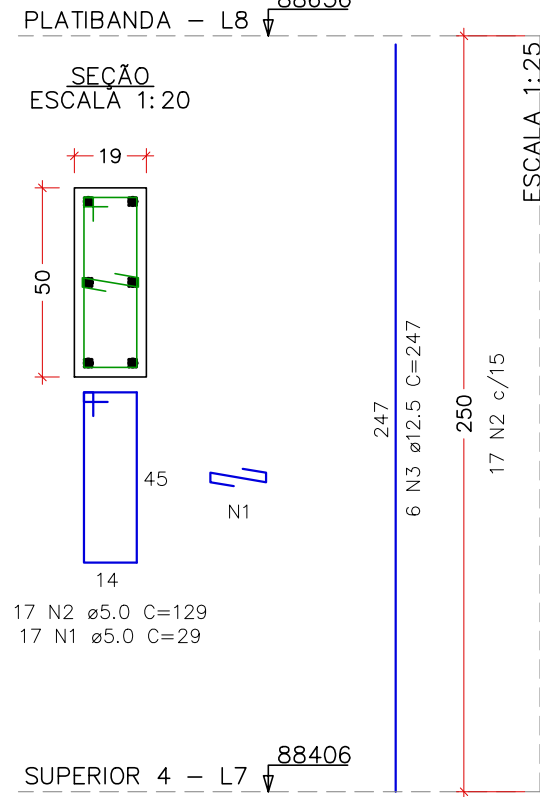
P94



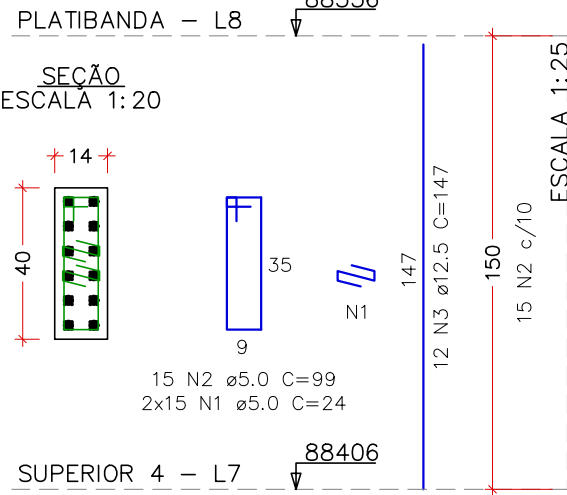
P47



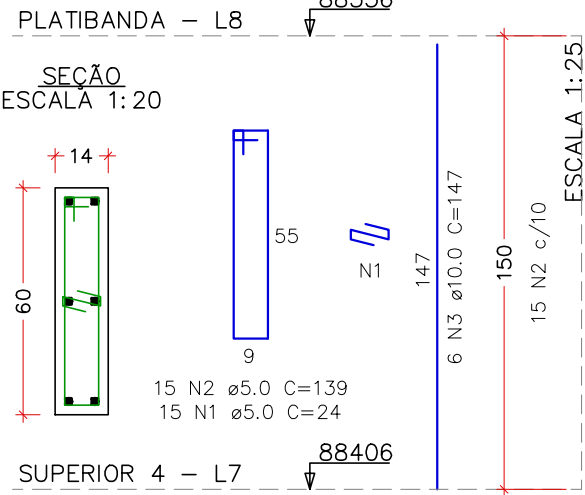
P48



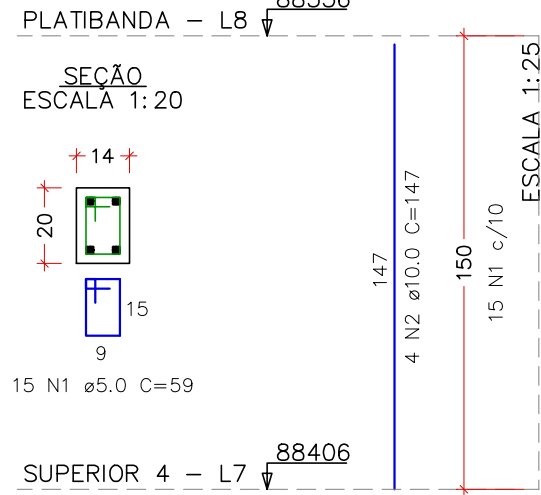
P87



P88=P65





P95



RELAÇÃO DO AÇO – PAV. PLATIBANDA						
ELEMENTO	AÇO	N	DIAM (mm)	QUANT	C.UNIT (cm)	C.TOTAL (cm)
5xP2	CA60	1	5.0	75	24	1800
	CA50	3	5.0	119	30	8925
	CA60	1	10.0	30	147	4410
2xP6	CA60	1	5.0	400	24	9600
	CA50	3	10.0	36	397	14292
	CA60	2	5.0	80	119	9520
P10	CA50	3	10.0	36	397	14292
	CA60	1	5.0	24	1080	25920
	CA60	2	5.0	15	119	1785
2xP18	CA50	3	12.5	45	24	1080
	CA60	1	5.0	30	29	870
	CA60	2	5.0	30	129	3870
P28	CA60	1	5.0	40	99	3960
	CA50	3	10.0	12	147	1764
	CA60	2	5.0	15	24	360
P29	CA60	1	5.0	15	24	360
	CA50	3	12.5	18	397	7146
	CA60	2	5.0	15	24	360
P32	CA60	1	5.0	15	24	360
	CA50	3	12.5	6	147	882
	CA60	2	5.0	25	29	725
2xP34	CA60	1	5.0	25	129	3225
	CA50	3	10.0	6	247	1482
	CA60	2	5.0	54	129	6966
2xP43	CA60	1	5.0	54	129	6966
	CA50	3	16.0	12	397	4764
	CA60	2	5.0	30	24	720
P47	CA60	1	5.0	30	99	2970
	CA50	3	10.0	12	147	1764
	CA60	2	5.0	45	29	1305
P48	CA60	1	5.0	15	129	1935
	CA50	3	10.0	14	147	2058
	CA60	2	5.0	17	29	493
P87	CA60	1	5.0	30	24	720
	CA50	3	12.5	6	247	1482
	CA60	2	5.0	54	129	6966
2xP88	CA60	1	5.0	15	99	1485
	CA50	3	12.5	12	147	1764
	CA60	2	5.0	30	24	720
P94	CA60	1	5.0	30	139	4170
	CA50	3	10.0	12	147	1764
	CA60	2	12.5	12	397	4764
P95	CA60	1	5.0	15	59	885
	CA50	2	10.0	4	147	588

RESUMO DO AÇO			
AÇO	DIAM (mm)	C.TOTAL (m)	PESO + 10% (kg)
CA50	10.0	281.2	190.7
	12.5	181	191.8
	16.0	47.8	82.7
CA60	5.0	793.7	134.6
PESO TOTAL (kg)			
CA50		465.2	
CA60		134.6	
VOLUME DE CONCRETO (C=30) = 3.87 m³			
ÁREA DE FORMA = 65.69 m²			

REV. 03	31/03/25	REVISÃO DE PROJETO CONFORME ANÁLISE SOLICITADA	DAC
REV. 02	24/02/25	REVISÃO DE PROJETO CONFORME ANÁLISE SOLICITADA	DAC
REV. 01	30/10/24	REVISÃO DE PROJETO COMPLETO	DAC
REV. 00	02/02/24	EMISSIONAL INICIAL	DAC
REVISÃO: DATA : DESCRIÇÃO:			RESP.:
CLIENTE			
			
PROJETO		COORDENAÇÃO	
		ALOISIO CAETANO FERREIRA CREA: MG-97.132/D	
Rua Cel. Joaquim Francisco, 341, Bairro Varginha CEP: 37501-052 - Itajubá / MG Tel: (35) 2143 - 9087 www.dacengenharia.com.br		RESPONSÁVEL TÉCNICO E AUTOR	
EMPREENHIMENTO		RAFAEL BARBOSA CARREIRA CAU: 00A155411-5	
CONSTRUÇÃO DA ESCOLA MUNICIPAL ALEGRIÑO			
ENDEREÇO		DISCIPLINA	
RUA LOURDES DE SOUZA SANTOS, COLINA VERDE		ESTRUTURAL	
POUSO ALEGRE – MINAS GERAIS		FASE DO PROJETO	
ASSUNTO		EXECUTIVO	
PROJETO ESTRUTURAL EM CONCRETO ARMADO		FOLHA N.º	
DETALHAMENTOS		26/53	
PILARES DO PAV. PLATIBANDA			
DATA INICIAL	ESCALA	REVISÃO	ARQUIVO
02/02/2024	INDICADA	R03	DAC-PMPA-ALEG-PE-EST-R03.DWG